



Indiana Health Information Exchange

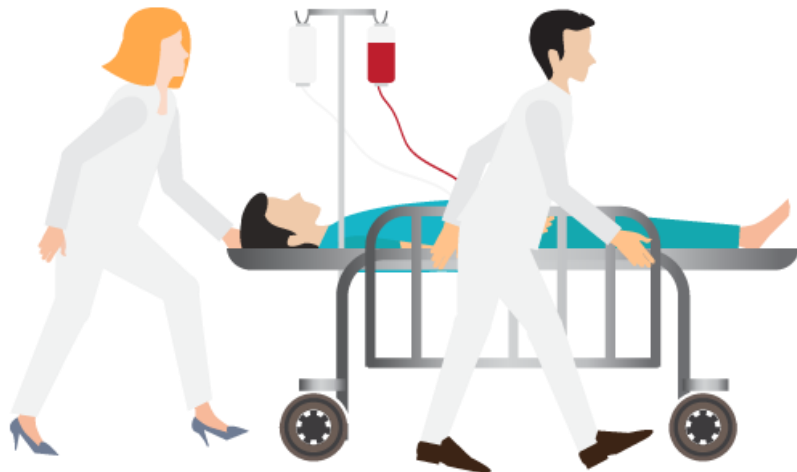
Better Outcomes. Delivered.

Through information exchange,  
we improve health and healthcare.

# Vital Statistics

## MISSION

Through information exchange,  
we improve health and healthcare.



- One of the Nation's largest HIEs
  - 100+ hospitals
  - 14,000+ practices and 40,000+ providers
  - 13 million+ patients
  - 11 billion clinical data elements
- Board Composition: Hospital System CEOs, Healthcare Associations, Academia, State, Community
- Regenstrief Institute partnership
- A 501(c)3 supporting organization
- **A Strategic Initiative to improve EHR Interoperability**

# Data You Need When You Need It, Where You Need it

---

Save time by accessing patients' "full story" through a single source of data

View information from outside care sources without leaving your EMR

Integrate data seamlessly into your current workflows and systems



# ONE SEARCH

---

- CareWeb search bar within your EMR (aka Smart Pass)
- Query results for the patient you are viewing by keyword or phrase
- Save and name searches to use on other patients
- Tailor search results using filters and operators, e.g. “leg AND fracture,” or “chest NOT pain”



The CareWeb search function is like Google for CareWeb – it's easy to find specific reports and labs.

**Dr. Donald Trainor**

Chief Medical Officer, HealthNet

# ONE CLICK

See more about the patient with one click



## BENEFITS

- Information delivered to physicians how and when it works best for patient care
- Reduces frustration
- Focus is on the patient, not chasing information

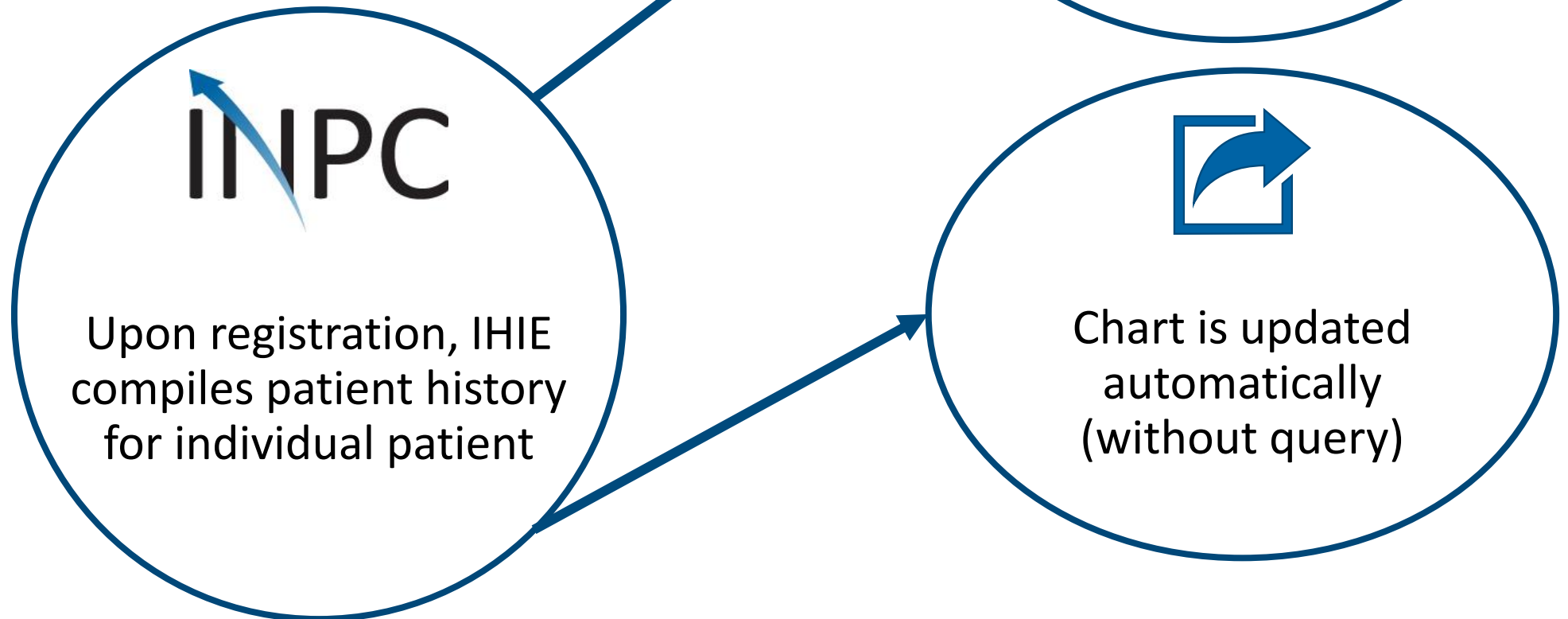
## QUOTES

“With respect to delivering messages directly into our EMR system, IHIE knows what they are doing, and knows where things need to go.”

“IHIE’s strength and experiences come into play in delivering messages directly into our physicians’ EMR system.”

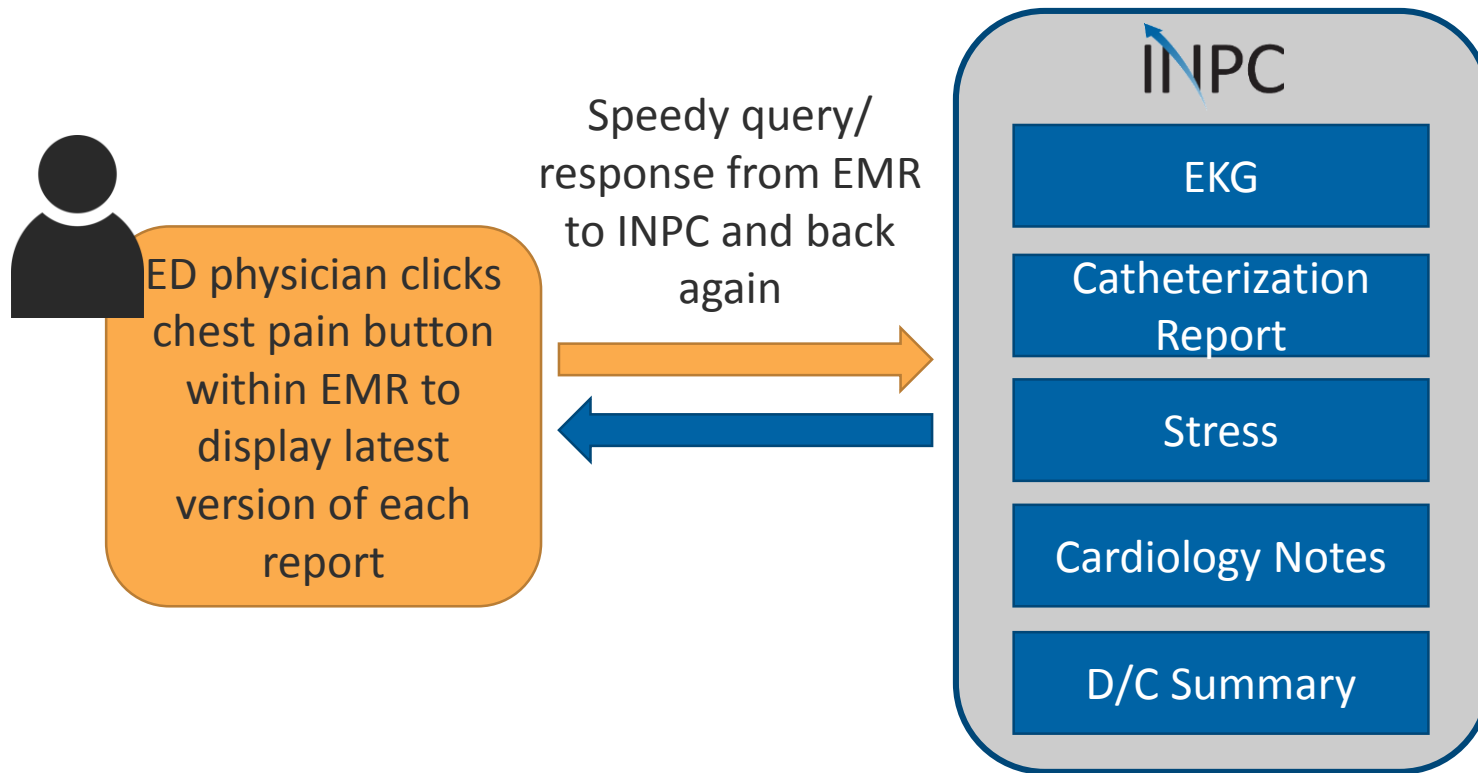
# ONE CHART

Provides one integrated chart for clinicians to view data from inside and outside the EHR without leaving the EHR.



# ONE CONDITION

## Chest Pain Example



**GOAL:** target a useful return of clinically relevant data to ED physicians who don't have time to search for this type of data in an outside application



Indiana University Health



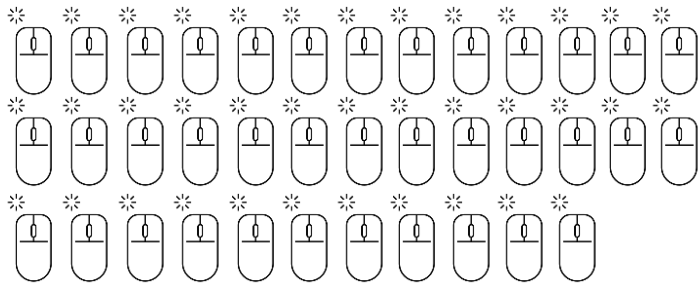
© 2018 Indiana Health Information Exchange



# ONE CONDITION (con't)

Cerner + CareWeb  
(Manual Search using SSO)

**34** clicks

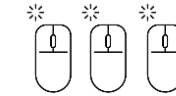


**4** minutes **30** seconds

VS

Using  
FHIR App

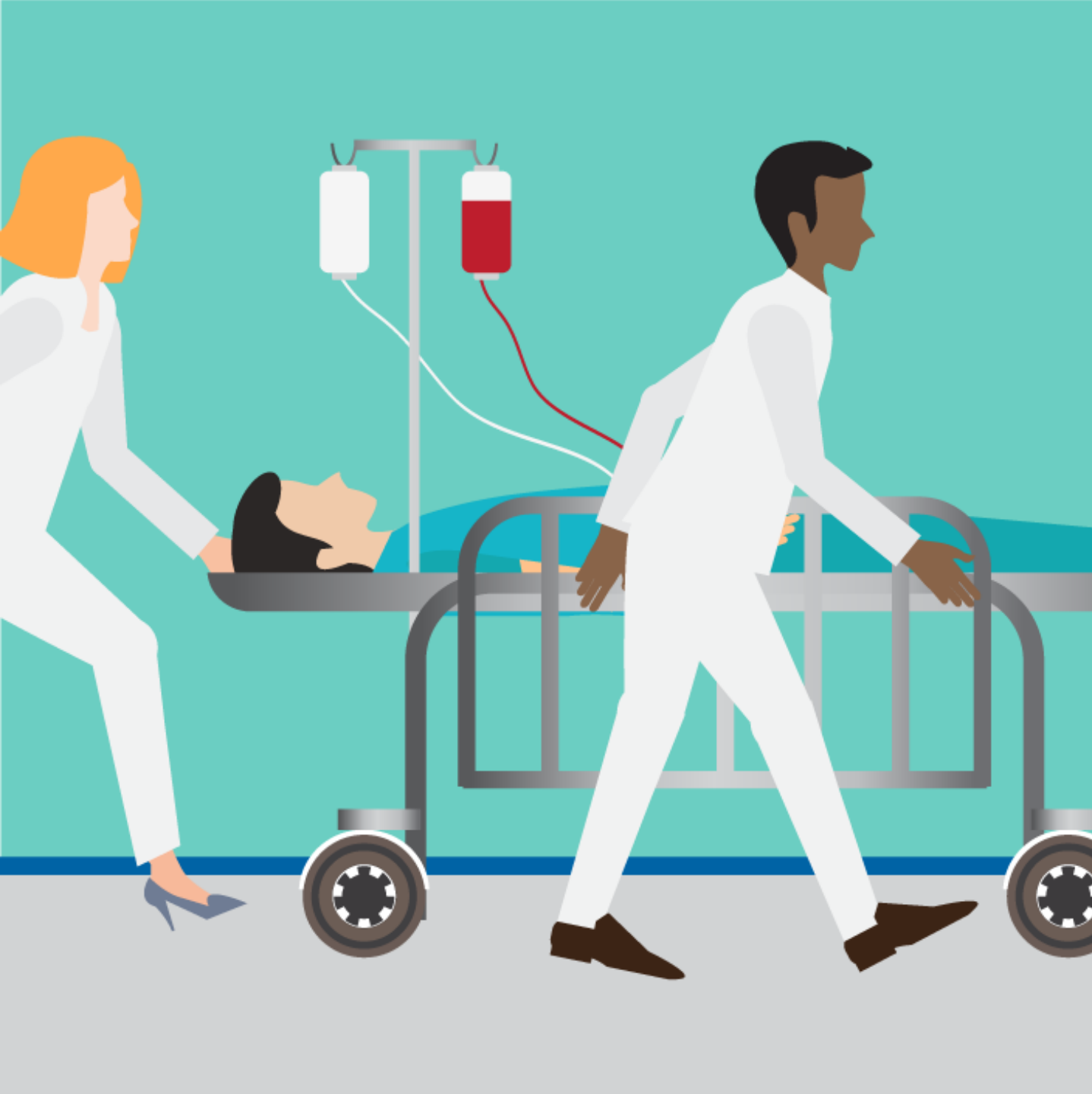
**3** clicks



Less than **12** seconds







# Thank you!

---

Contact IHIE:

317.644.1750  
www.ihie.org

info@ihie.org  
@IndianaHIE